



*You dream it...
you live it*



The background of the entire page is a repeating pattern of stylized, light gray eyes. Each eye is composed of a simple outline with several short, radiating lines representing eyelashes. The eyes are arranged in a grid-like fashion, filling the entire background.

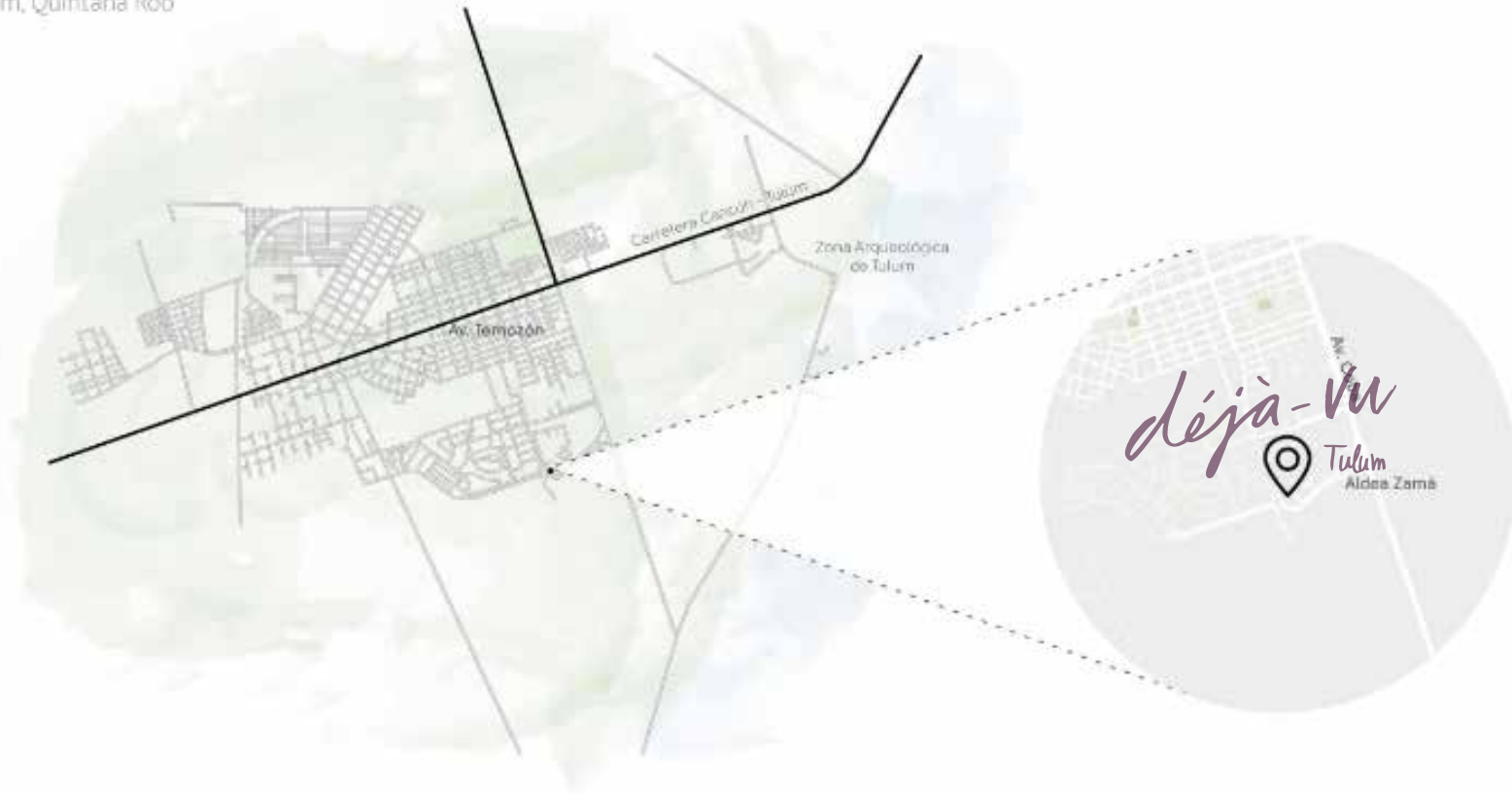
Déjà vu (dea vy, in French “already seen”)

The gateway that will guide you to the life you have always dreamed of... That strong feeling of that memory that has made you get to where you are... A memory that makes you connect with your mind and your senses...

The connection between your mind and the mysticism of your dreams, transforming your emotions, elevating them to the maximum... The place that always existed in your dreams, that makes you transcend. Experience nature in the present moment, travel in time and experience your dreams here and now...

ZONA

Tulum, Quintana Roo





Expert in building mansions, restaurants, SPAS and condominiums for more than 30 years.
Its philosophy is progress, and in terms of construction offer maximum value for investment.
Entrepreneur since the age of 15.

Elías builds outstanding developments, using materials from the
higher quality in order for the property to generate greater capital gains.

Déjà Vu, developed by Mr. Amkie, is the best value proposition in Aldea Zamá.



GRUPO

THE MASTER DEVELOPER



Grupo R4, with more than 30 years of experience in construction, plans and develops projects residential and commercial real estate that guarantee the capital gain of the investment and contribute to the growth of the communities in which they are located, providing a better quality of life to the population, offering quality services and spaces with infrastructure, security and tranquility to the households, thus contributing with the public administration to the structured growth that leads to better cities and an exceptional quality of life.



- The Dead Sea Salt pool and cold water plunge at Dejavu Tulum is awesome. I know. I have one in my own home, and it helps me to relax and maintain peak health. Everyone's talking about finding the perfect getaway, with the world in such bad shape these days. Riding out the storm in a luxury condo on a tropical beach with your own personal spa sounds like a great solution. -

Tony Robbins

NY Times # 1 best selling author
1 Life & Business strategist





Déjà-Vu Tulum

Developed according to the current trends in wellness,
with services that create value through health,
wide spaces and functionality,
transmitting the mysticism that creates a connection
between the millenary energy of Tulum and the enigmatic
design that will make you transport yourself in time...

Déjà Vu, is the place you always wanted to return to...

Located in the main area of Aldea Zamá,
which connects with the main attractions of the location,
generating the highest profitability
and capital gains that a real estate investment can create.

Déjà Vu is for people who like to enjoy an ideal lifestyle
in a natural environment,
living the comfort that its wide spaces offer.

Déjà Vu has 2 & 3 bedroom residences with a relaxing area,
local and quality materials,
and smart systems that will simplify your life.
Live the best of nature with comfort
to be free from concerns.





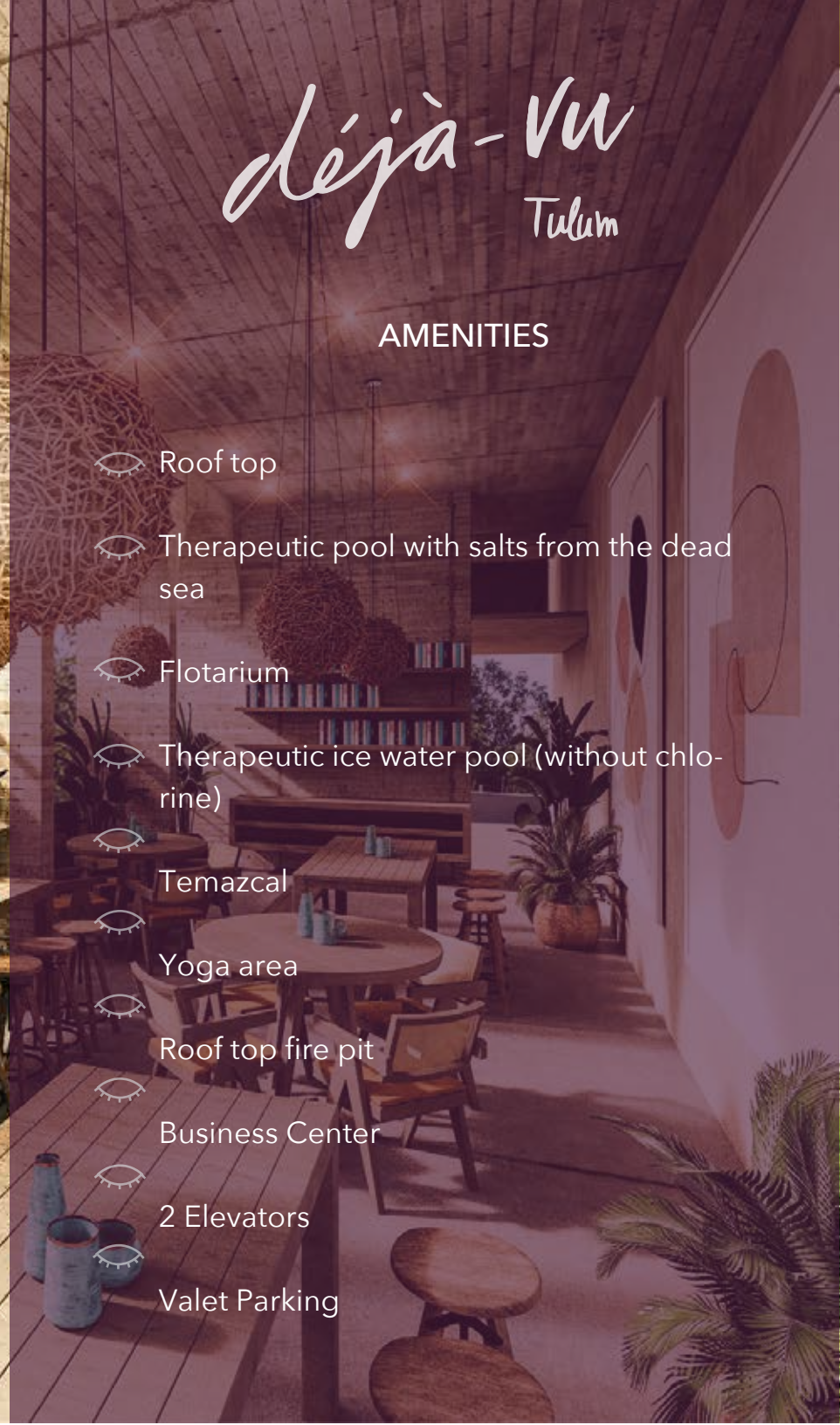


deja-vu

Tulum

AMENITIES

- 👁️ Roof top
- 👁️ Therapeutic pool with salts from the dead sea
- 👁️ Flotarium
- 👁️ Therapeutic ice water pool (without chlorine)
- 👁️ Temazcal
- 👁️ Yoga area
- 👁️ Roof top fire pit
- 👁️ Business Center
- 👁️ 2 Elevators
- 👁️ Valet Parking









The background of the image is a repeating pattern of stylized, light gray eyes. Each eye is composed of a simple outline with several short, straight lines radiating from the bottom, representing eyelashes. The eyes are arranged in a grid-like fashion, filling the entire background.

Layouts

MASTERPLAN



The background of the image is a repeating pattern of stylized, light gray eyes. Each eye is composed of a simple outline with several short, radiating lines representing eyelashes. The eyes are arranged in a grid-like fashion, filling the entire background.

Apartment



deja-vu
Tulum

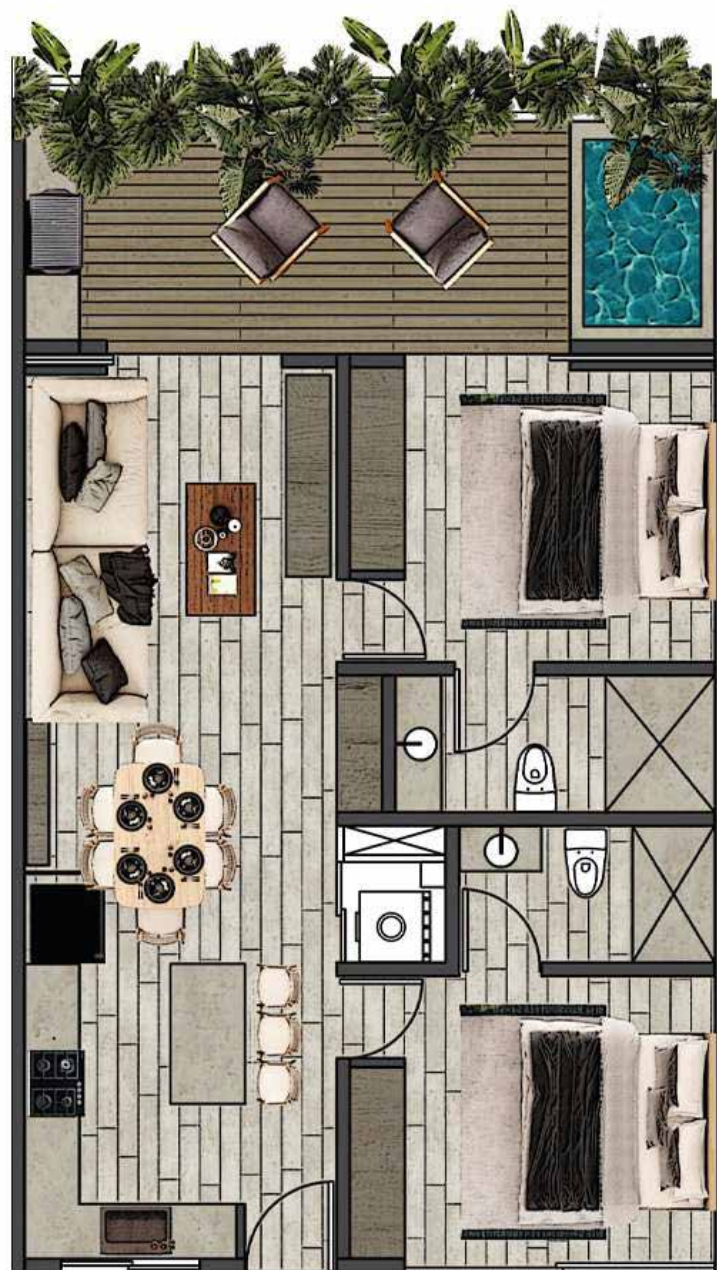
Model A

INTERIOR 80.37 m²

GARDEN 21.8 m²

BALCONY 11.83 m²

TOTAL 114 m²



deja-vu
Tulum

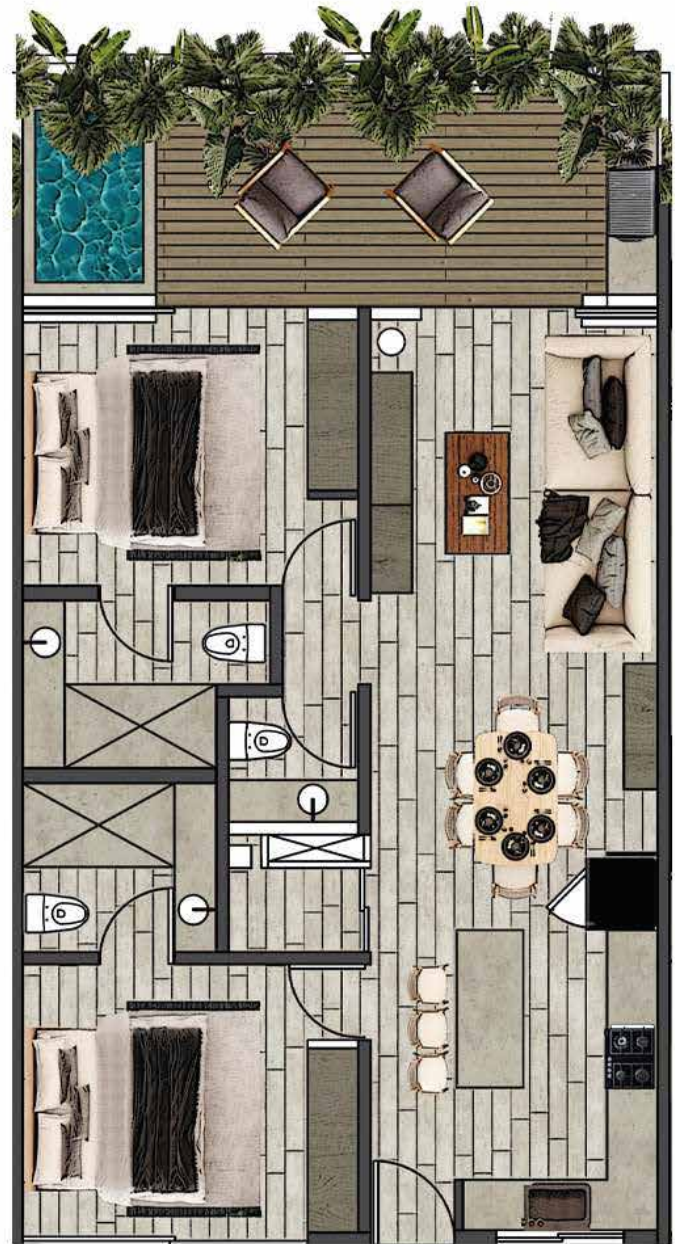
Model B

INTERIOR 87.67 m²

GARDEN 21.8 m²

BALCONY 11.83 m²

TOTAL 121.3 m²



déjà-vu
Tulum

Model C

INTERIOR 80.37 m²

GARDEN 19.75 m²

BALCONY 12.63 m²

POOL 13.02 m²

TOTAL 125.77 m²



déjà-vu
Tulum

Model D

INTERIOR 87.67 m²

GARDEN 19.75 m²

BALCONY 12.63 m²

POOL 13.02 m²

TOTAL 133.07 m²



deja-vu

Tulum



INTERIOR 125.97 m²

GARDEN 18.74 m²

BALCONY 12.35 m²

POOL 6.93 m²

TOTAL 163.99 m²



10 YEAR FINANCING

*You dream it...
you live it*



